

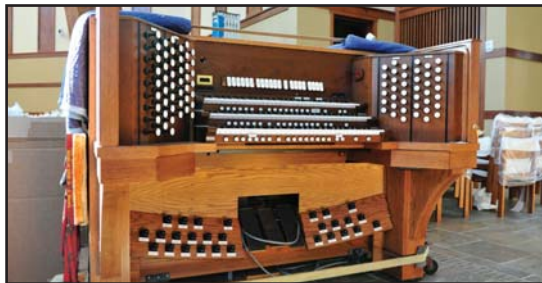
UPDATE MLC UPDATE

Chapel of the Christ Getting Organ-ized

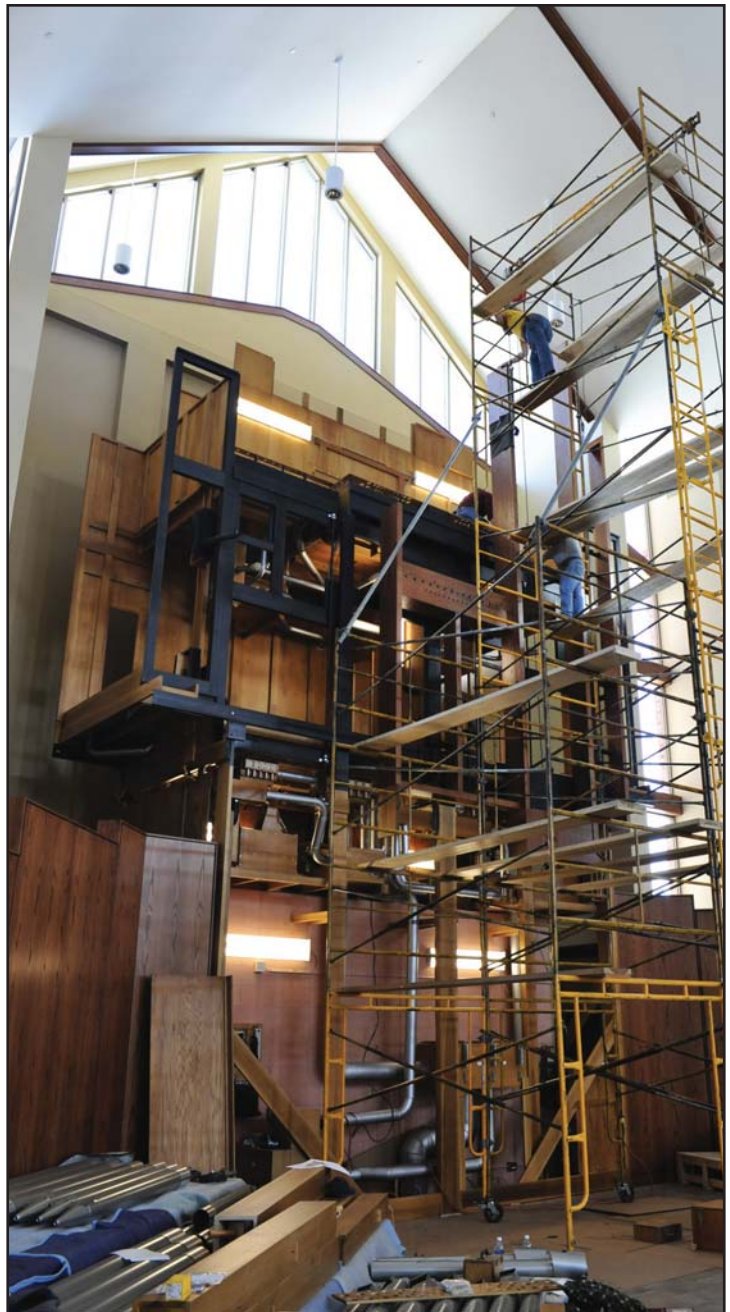
Moving in: Our campus family and other volunteers helped carry in 1,200 chairs and two semi's of organ pipes, cabinetry, and other parts necessary for organ assembly. (pictured below, Phil Janisch carries in two wooden organ pipes.)



The Organ: The organ, built by Schantz Organ Co. of Orrville, Ohio, will stand 42 feet tall at its highest point. It will have 60 ranks, including three digital ranks. The pipes will number almost 3,300. They are made of wood, zinc, copper, and other metals. The number of ranks and the scaling of pipes are designed specifically for this chapel space.



Construction schedule: Assembly is scheduled to finish by Jan. 22. Voicing of the individual pipes will begin Feb. 1 and is scheduled to take three weeks. The MLC campus family will begin using the chapel in late February or early March. (For more photos visit our website picture gallery.)



Dedication Weekend April 10 & 11, 2010

Saturday, April 10: Dedication Service 7:00 pm

Sunday, April 11: Dedication Service 2:30 pm

For more information visit www.mlc-wels.edu